

Fees and Charges

How Much Will It Cost:

While this can be a difficult time, it is important that the cost implications of moving into a residential aged care facility are understood.

Each resident is required to pay a Daily Care Fee. This fee is set by the Department of Social Services on a quarterly basis in the '[Schedule of resident fees and charges](#)'.

There are options for payment of fees. Please refer to attached document for specific fees and charges.

Visit www.myagedcare.gov.au for full details and descriptions of the rooms on offer or contact us at www.meath.org.au or via phone on 9309 7000.

Vision: Superior living options for older people.

Mission: Provision of vibrant and supportive communities, empowering older people to achieve their preferred lifestyle.

Values: Meaningful Relationships - Creating mutual support and respect

Empathy - Engaging with each person with understanding, warmth and kindness

Advocacy - Working in the best interests of each person

Trust - Being open, honest and acting in good faith

Holistic - Caring for the total wellbeing of each person

DR MARY SURVEYOR CENTRE

18 Hocking Road KINGSLEY WA 6026
All Admission Enquiries - Telephone: (08) 9309 7000



The Dr Mary Surveyor Centre is a state of the art facility in both design and services. There are 129 rooms split between 3 floors

Common Areas Description

Each floor has its own dining room and comfortable communal lounge room providing a peaceful outlook over parkland. We have two smaller library/lounge rooms that can be closed for privacy when residents have guests or open onto an outside mezzanine level with a pot plant garden maintained by a group of residents who are keen gardeners.

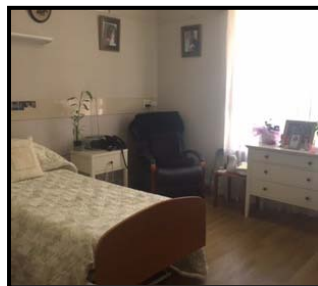


The ground floor hosts a courtyard accessible to all residents and families with an adjacent café style area which can also be utilized for small gatherings and family functions. There is also a gymnasium area on the second floor that can be used by residents after an assessment by the physiotherapist/general practitioner has identified it as an appropriate therapeutic intervention

Room Description

All rooms at the Dr Mary Surveyor Centre are of a high quality, with carpet/hard flooring dependent upon the area. The rooms are in good condition and host a number of features including:

- Spacious beautifully furnished single rooms.
- Wall mounted flat screen television with remote and reverse cycle air conditioner.
- Window overlooking magnificent views of picturesque scenery and peaceful surrounds.
- A picture rail runs along all walls allowing residents to hang their favourite art work or family photos.
- All rooms have a generous sized ensuite
- Emergency Nurse call buttons



Additional Care Or Services Offered At No Additional Cost

All meals are provided and cooked on site. Cyclical menus are developed in consultation with a dietician and are reviewed regularly. Specific cultural requirements and specific diets can be catered for, including the supply of modified textured food and fluids. Meath Care provides the opportunity for residents to invite guests to join them for a meal in one of the common areas (at an additional cost).

Laundry & Cleaning Services

Meath Care provides all bed linen and towels. Clothing and linen is laundered on site by Meath Care staff. Residents' bedrooms and ensuites are cleaned weekly and checked daily.

General Amenities & Activities

Activities are a very important part of the daily routine. They are planned and coordinated by the activity/therapy staff to promote social interaction and maintain social activity.

Examples of activities include:

- Bus trips to places of interest, visiting concert parties, carpet bowls, word games, darts, golf, newspaper and book readings, fashion shows, daily walking program and movies.

Church Services

Anglican services are conducted weekly in the on-site chapel and Catholic services are held on the fourth Wednesday of the month.



Library Service

The local mobile library visits monthly and we have two communal areas with donated books residents are welcome to borrow.

Other Health Support Services & Complimentary Services

Meath Care has access to Physiotherapists and Occupational Therapists. The facility can also organize for other health professionals such as dentists, optometrists and hearing service providers to visit you at the facility to complete an assessment. Some complimentary therapies, which have been assessed as being of therapeutic benefit to the resident, are provided in-house, e.g. massage, aromatherapy.

Family members are encouraged to bring their well mannered dogs in to visit residents as often as possible (no overnight stays).

Respite

Respite is available for short stay periods.

Residents And Representatives Meetings

Residents/Representatives meetings are held on a regular basis. They are a forum for residents to comment or make suggestions about the service and activities offered. All residents are welcome to these meetings.

Podiatry Services

Podiatry Services are provided as needed following the completion of an assessment.

Optional Amenities You May Like to Have (Charges Apply)

Hairdressing

There is a hairdresser that attends the Dr Mary Surveyor Centre two days per week. These services are available on a fee for service basis.

Telephone

The rooms also have access to telephone services for both external and internal calls arranged through the facility.

Newspapers

Newspaper delivery can be arranged through the facility and charged via the newsagency.

Foxtel

Foxtel can also be arranged for level 3 of the building (Perry floor) at a cost to the resident.

Dry Cleaning

Dry cleaning can be organised through Reception at a cost to the resident/family.

